



Balancing Acts Have Never Looked This Good

Features	b9455	b9465	b9755
Gauge arm with wheel weight positioning system	•	•	•
VPI* - Virtual Plane Imaging	•	•	•
1D SAPE - Automatic input of distance	•	•	•
2D SAPE - Automatic input of diameter		•	•
3D SAPE - Automatic input of width		•	•
17" TFT Monitor			•
ALU mode	4	4	5
Easy Alu - Auto selection of ALU mode			•
PAX mode	•	•	•
Automatic braking after measurement	•	•	•
"Sticky-Top" at 12 h position		•	•
Pedal-operated main shaft lock	•	•	•
HWM/SWM - Behind-the-spokes weight placement	•	•	•
Multiple user capability	4	4	9
Optimisation	•	•	•
Wheel guard	•	•	•
Embedded PC technology			•
Compatible with asanetwork			Option
Languages			>20

* patented / patent pending

Technical Data		b9455	b9465	b9755
Rim centre bore diameter	mm	43 - 116	43 - 116	43 - 116
Shaft diameter	mm	40	40	40
Measuring speed	rpm	<100	~200	~200
Measuring time	s	6 - 9	6 - 8	6 - 8
Rim width	inch	1 - 20	1 - 20	1 - 20
Rim diameter	inch	8 - 30	8 - 25	8 - 25
Max wheel width	mm	530	530	530
Max wheel diameter	mm	900	950	950
Max wheel weight	kg	70	70	70
Dimensions (W x D x H)	mm	1125x1175x1715	1485x1140x1770	1485x1140x1770
Weight (with standard accessories)	kg	80	142	145
Power Supply	V		200 - 240, 1 ph, 50/60 Hz	



Snap-on Equipment

SINGAPORE
Snap-on Tools Singapore Pte Ltd
25 Tagore Lane, #01-02,
Singapore 787602
Tel: (65) 6451-5570 • Fax: (65) 6451-5574

INDONESIA
Snap-on Tools Singapore Pte Ltd - Indonesia Rep. Office
Graham Pratama Building, 20th Floor
Jl. M.T. Haryono Kav 15, Jakarta 12810, Indonesia
Tel: (62-21) 8370-9611 • Fax: (62-21) 8370-9612

MALAYSIA
Snap-on Tools Singapore Pte Ltd - Malaysia Branch
Unit A-2-3, Block A, 3-2, Jaya One
No. 72A, Jalan Universiti
46200 P.J., Selangor, Malaysia
Tel: (603) 7957-3088 • Fax: (603) 7958-2088

PHILIPPINES
Snap-on Tools Singapore Pte Ltd - Philippines Branch
4/F, 2053 Building, Edison Street, San Isidro
Makati City, 1234 Philippines
Tel: (63-2) 843-7935 • Fax: (63-2) 843-7730

THAILAND
Snap-on Tools (Thailand) Co. Ltd.
5th Floor, Talomsim Building, 924 Rama 3 Road
Bangpompang Yannawa, Bangkok 10120, Thailand
Tel: (66) 2294-9660 • Fax: (66) 2294-9665

HONG KONG
Snap-on Tools Hong Kong Limited
Unit 2010, 20/F, Laford Centre, 838 Lai Chi Kok Road
Cheung Sha Wan, Kowloon, Hong Kong
Tel: (852) 2370-3700 • Fax: (852) 2370-3400

KOREA
Snap-on Tools Korea
#505 & 506, BuCheon Techno Park Block 3,
Building 301, 365 SamJung-Dong, OhJung-Gu
Bucheon City, GyeongGi-do, Korea 421-809
Tel: (82-32) 326-7310 • Fax: (82-32) 326-7312

TAIWAN
Snap-on Tools Hong Kong Limited, Taiwan Branch
3F, -4, #9 Wuchuan 1st Road, Wu-Ku Industry Park
Taipei County 24892, Taiwan ROC
Tel: (886-2) 2298-9789 • Fax: (886-2) 2298-2288

Authorized Reseller:

Part of the machine is illustrated with optional accessories at extra cost.
Technical modifications reserved Code: 2502 814J 06/2010



b9455, b9465 & b9755



b9455



b9755



b9465

- Including many patented features such as virtual plane imaging (VPI) technique, adhesive wheel weight clamp, and optimisation
- Simple operation thanks to automatic input of distance rim/machine
- Input of diameter and width via buttons
- The gauge arm guides the user to the weight position inside the rim (ALU mode)
- In the split weight mode adhesive weights can be hidden behind adjacent spokes of alloy rims
- PAX wheel mode
- Dual digital display to read out the unbalance of both planes separately
- Matching mode
- Automatic braking after measuring run
- Pedal-operated main shaft lock
- Storage of up to four different user profiles



All of b9465 with:

- Convenient user guidance on 17" TFT monitor
- Storage of up to nine different user profiles

All of b9455 with:

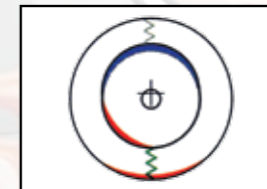
- Automatic input of all wheel data (3D SAPE)
- "Sticky-Top" at 12 h imbalance position



The patented Virtual Plane Image technique provides for an increased measurement accuracy



Gauge arm with integrated weight clamp (patented) for optimum positioning of adhesive weights



Possible run-out of the rim is determined and opposed to the heavy spot of the tyre before the residual unbalance is balanced using balance weights



The visual appearance of high-quality alloy rims is not disturbed by visible adhesive weights

Standard Accessories



Rim width clamp
EAA047G21A



Universal weight plier
EAA0247G22A



Wing nut and cone set
(diameter 42-77, 72-99, 91-116 mm)

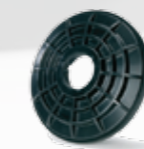
Optional Accessories



Weight removing tool
EEHT300A



Stud hole flange
(various sizes)



Clamping plate
EAA0307G82A



Universal adaptor SCA
EAA026082A



Centring ring
(various sizes)



Centering cone
(light trucks)
EAA0304G39A



Plastic spacer ring
(light trucks)
EAA0277D59A



Light truck kit
EAK0257G02A



Motorcycle wheel adaptor
EAA0260D83A