

i-Aligner Silver XD

Imaging Wheel Alignment Systems



High-resolution imaging
technology delivers speed
and accuracy

JohnBean

i-Aligner Silver XD

HIGHLY ACCURATE WHEEL ALIGNMENT SYSTEMS

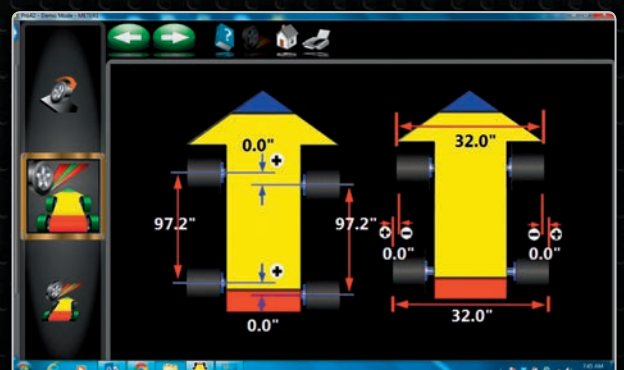
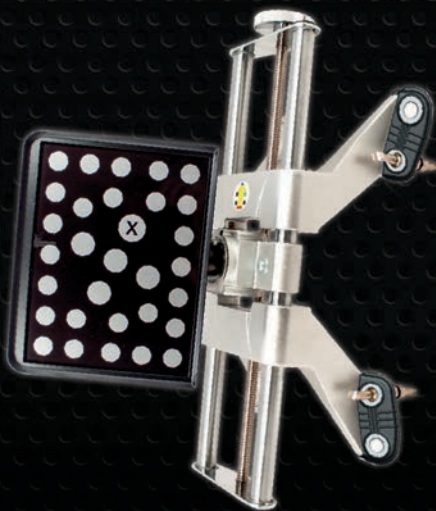
VERSATILE, ACCURATE HARDWARE

- High-resolution cameras produce accurate, live alignment readings and diagnostic data
- Passive front and rear XD targets improve durability with no electronics to damage
- Advanced XD targets and AC100 clamps are lightweight, durable and impact resistant

STANDARD DIMENSIONING AND PRODUCTIVITY FEATURES

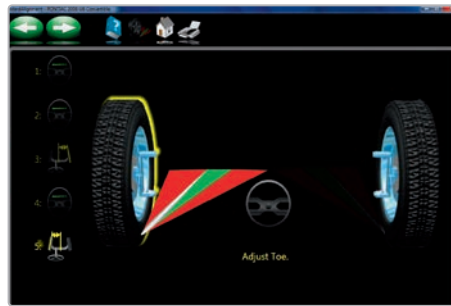
- Vehicle track width and wheel base
- Individual wheel side set and set-back
- EZ-TOE* for adjusting without using the steering wheel holder
- Guided adjustments of single tie rod, drag link and cradle

*Patented and/or patent-pending features



THE i-Aligner Silver XD WHEEL ALIGNMENT SYSTEM PROVIDES CORE FEATURES FOR THE ALIGNMENT PROFESSIONAL

Patented imaging technology provides accurate and real-time measurements that improves productivity. User-friendly features such as EZ-TOE*, VODI* and an extensive vehicle specification database delivers customer satisfaction, ease of use and accuracy.



RIDE HEIGHT* MEASUREMENT

Manual ride height to obtain proper alignment specs for those vehicles requiring it

EZ-TOE*

Turn the front wheels and access difficult adjustment points while still displaying centred toe readings

USER-FRIENDLY INTERFACE

Use available step-by-step instructions as a guide for completing even the most complex tasks

AC100 UNIVERSAL WHEEL CLAMPS



FAST AND EASY TO USE

- Self-centering design for accurate measurement of vehicle dimensions
- Two-sided claws eliminate accessories and allow reliable clamping even over hub caps
- Accessories available to accommodate larger wheels

MANUFACTURER SPECS

Extensive OEM specs allow quick and accurate vehicle selection

VODI™

Vehicle Orientation Directional Indicator* – guides the technician through the measurement process

HELP VIDEOS

View detailed videos of how to make needed adjustments to complete even the most complex task

*Patented and / or patent-pending features

JohnBean

PRODUCT FEATURES & SPECIFICATIONS

OPTIONAL ACCESSORIES

- AC100 universal wheel clamp extension kit: EAK0268J62A
- Paddle rollback kit TT: EAK0277J28A
- Quick clamp kit: EAK0268J63A
- 105" Fixed beam kit: EAA0321J01AKS3
- TIP target: EAK0256J71A
- Tilt camera beam kit: EAK0289J64A



SPECIFICATIONS

- Wheel size:
11" – 22"
(27.94 cm – 55.88 cm)
- Track width:
48" – 96"
(122 cm – 244 cm)
- Wheel Base:
79" – 180"
(201 cm – 457 cm)
- Shipping weights:
501 lbs (227 kg)
- Power requirements:
120/230V 1Ph 50/60Hz

AC100 SPECIFICATIONS

- Weight:
4.9 – 5.2 kg
(10.9 – 11.5 lbs)

STANDARD ACCESSORIES

- Wheel clamps & targets
- Steering wheel holder
- Brake pedal depressor
- Two wheel chocks

SINGAPORE

Snap-on Tools Singapore Pte Ltd
25 Tagore Lane, #01-02, Singapore 787602
Tel: (65) 6451-5570 • Fax: (65) 6451-5574

HONG KONG

Snap-on Tools Hong Kong Limited
Unit 2010, 20/F, Laford Centre, 838 Lai Chi Kok Road, Cheung Sha Wan, Kowloon, Hong Kong
Tel: (852) 2370-3700 • Fax: (852) 2370-3400

INDONESIA

Snap-on Tools Singapore Pte Ltd - Indonesia Rep. Office
Graha Pratama Building, 14th Floor, Jl. M.T. Haryono Kav 15, Jakarta 12810, Indonesia
Tel: (62-21) 8370-9611 • Fax: (62-21) 8370-9612

KOREA

Snap-on Tools Korea
#505 & 506, BuCheon Techno Park Block 3, Building 301, 365 SamJung-Dong, OhJung-U
Bucheon City, GyeongGi-do, Korea 421-809
Tel: (82-32) 326-7310 • Fax: (82-32) 326-7312

MALAYSIA

Snap-on Tools Singapore Pte Ltd - Malaysia Branch
B-6-10, Street Mall, One South, Taman Serdang Perdana, 43300 Seri Kembangan, Selangor, Malaysia
Tel: (603) 8957-1938 • Fax: (603) 8957-2938

PHILIPPINES

Snap-on Tools Singapore Pte Ltd - Philippines Branch
Unit 801 Prime Land, Market Street, Madrigal Business Park, Ayala Alabang, Muntinlupa City,
1781 Philippines
Tel: (63-2) 843-7935 • Fax: (63-2) 843-7730

TAIWAN

Snap-on Tools Singapore Pte Ltd - Taiwan Branch
3F-4, #9 Wuquan 1st Road, New Taipei Ind. Park, Xinzhuang District 24892, New Taipei City, Taiwan ROC
Tel: (886-2) 2298-9789 • Fax: (886-2) 2298-2288

THAILAND

Snap-on Tools (Thailand) Co. Ltd.
Talomsim Building, 924 Rama 3 Road, Bangpongpang Yannawa, Bangkok 10120, Thailand
Tel: (66) 2294-9660 • Fax: (66) 2294-9665